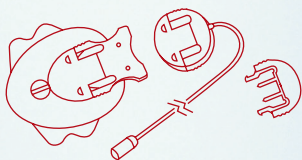


neria™ soft infusion sets



Product Specifications

| | |
|-------------------|------------------------------------|
| Cannula: | Soft |
| Insertion angle: | 20-45 degrees (angled) |
| Disconnection: | Yes at site |
| Needle gauge: | G27 |
| Cannula diameter: | 0.68 mm |
| Needle lengths: | 13 or 17 mm |
| Tubing lengths: | 60, 80 or 110 cm (23", 31" or 43") |
| Adhesive: | Built-in |

Gauge size

G27

Needle lengths

- 13 mm
 17 mm

Tubing lengths

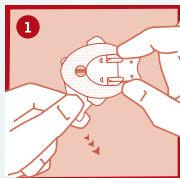
- 60 cm - 23"
 80 cm - 31"
 110 cm - 43"

The neria™ soft infusion sets are sold in boxes containing 10 sets. Cannulae are also sold separately – in boxes containing 10 pcs/box.

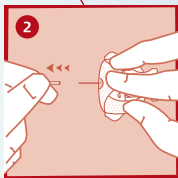
Fact Card

Distributed by:

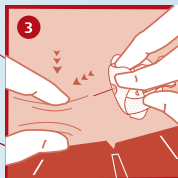
neria™ soft infusion sets user steps



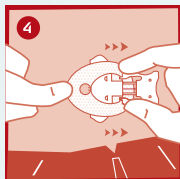
Remove the front part of the adhesive backing paper.



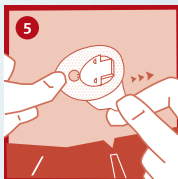
Remove the needle guard.



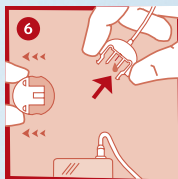
Pinch the skin with one hand and insert the neria™ soft infusion set.



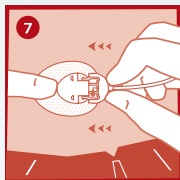
Remove introducer needle.



Remove the remaining adhesive backing paper.



Prime tubing according to pump manufacturer's instructions for use.



Insert the connector needle.

Please note that this guide only illustrates some of the steps to follow when inserting the neria™ soft infusion sets and it is not a substitute for reading the instructions for use which comes with the product.

neria is a trademark of Unomedical a/s