

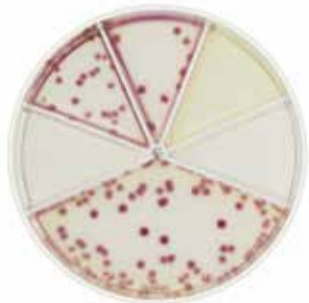
# FLEXICULT<sup>®</sup>

## URINKIT

SSI Diagnostica A/S  
 Herredsvejen 2  
 3400 Hillerød  
 Denmark  
 T +45 4829 9100

ssidiagnostica.com

### *E. COLI*

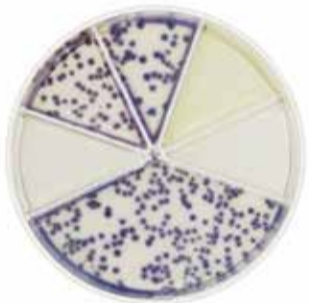


10<sup>3</sup> cfu/mL



10<sup>5</sup> cfu/mL

### *ENTEROBACTER SP.*

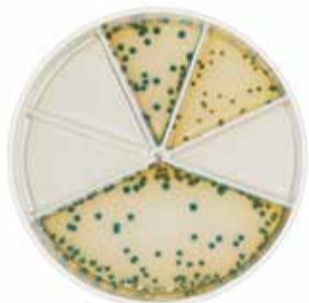


10<sup>3</sup> cfu/mL



10<sup>5</sup> cfu/mL

### *PROTEUS VULGARIS*



10<sup>3</sup> cfu/mL



10<sup>5</sup> cfu/mL

### *ENTEROCOCCUS FAECALIS*

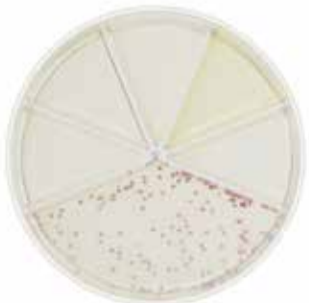


10<sup>3</sup> cfu/mL



10<sup>5</sup> cfu/mL

### *STAPHYLOCOCCUS SAPROPHYTICUS*



10<sup>3</sup> cfu/mL



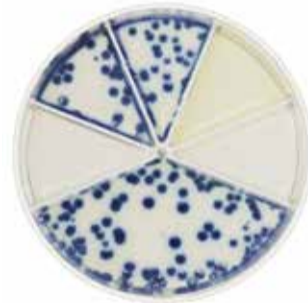
10<sup>5</sup> cfu/mL

### *CANDIDA SP.*

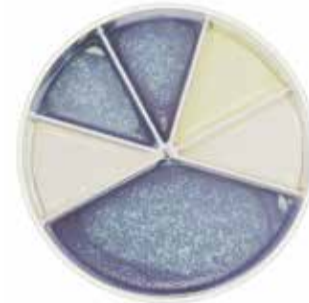


10<sup>5</sup> cfu/mL

### *KLEBSIELLA SP.*



10<sup>3</sup> cfu/mL



10<sup>5</sup> cfu/mL

### *PROTEUS SP.*



10<sup>3</sup> cfu/mL



10<sup>5</sup> cfu/mL

### *PSEUDOMONAS AERUGINOSA*



10<sup>3</sup> cfu/mL



10<sup>5</sup> cfu/mL

### *ENTEROCOCCUS FAECIUM*



10<sup>3</sup> cfu/mL



10<sup>5</sup> cfu/mL

### AFLÆSNING AF RESISTENS

I tabellen herunder vises hvilke bakterier, der har en naturlig resistens over for de fem antibiotika, fx er *Klebsiella* sp. altid resistent overfor ampicillin, enterokokker resistente overfor trimethoprim, sulfamethizol, mecillinam, *Pseudomonas* sp. og *Candida* sp. er altid resistente overfor alle fem antibiotika i Flexicult<sup>®</sup> pladen.

Bakterie/ Svampe	Resistent = R				
	Trime-thoprim	Sulfame-methizol	Ampicillin	Nitrofu-rantoin	Mecilli-nam
<i>E. coli</i>	.	.	.	.	.
<i>Klebsiella</i> sp.	.	.	R	.	.
<i>Enterobacter</i> sp.	.	.	R	.	.
<i>Proteus</i> sp.	.	.	.	R	.
<i>Proteus vulgaris</i>	.	.	R	R	.
<i>Pseudomonas aeruginosa</i>	R	R	R	R	R
<i>Enterococcus faecalis</i>	R	R	.	.	R
<i>Enterococcus faecium</i>	R	R	.	.	R
<i>Staphylococcus saprophyticus</i>	.	.	.	.	.
<i>Candida</i> sp.	R	R	R	R	R

R kan *in vitro* se ud som følsom, men klinisk er der ingen effekt og skal svares R